

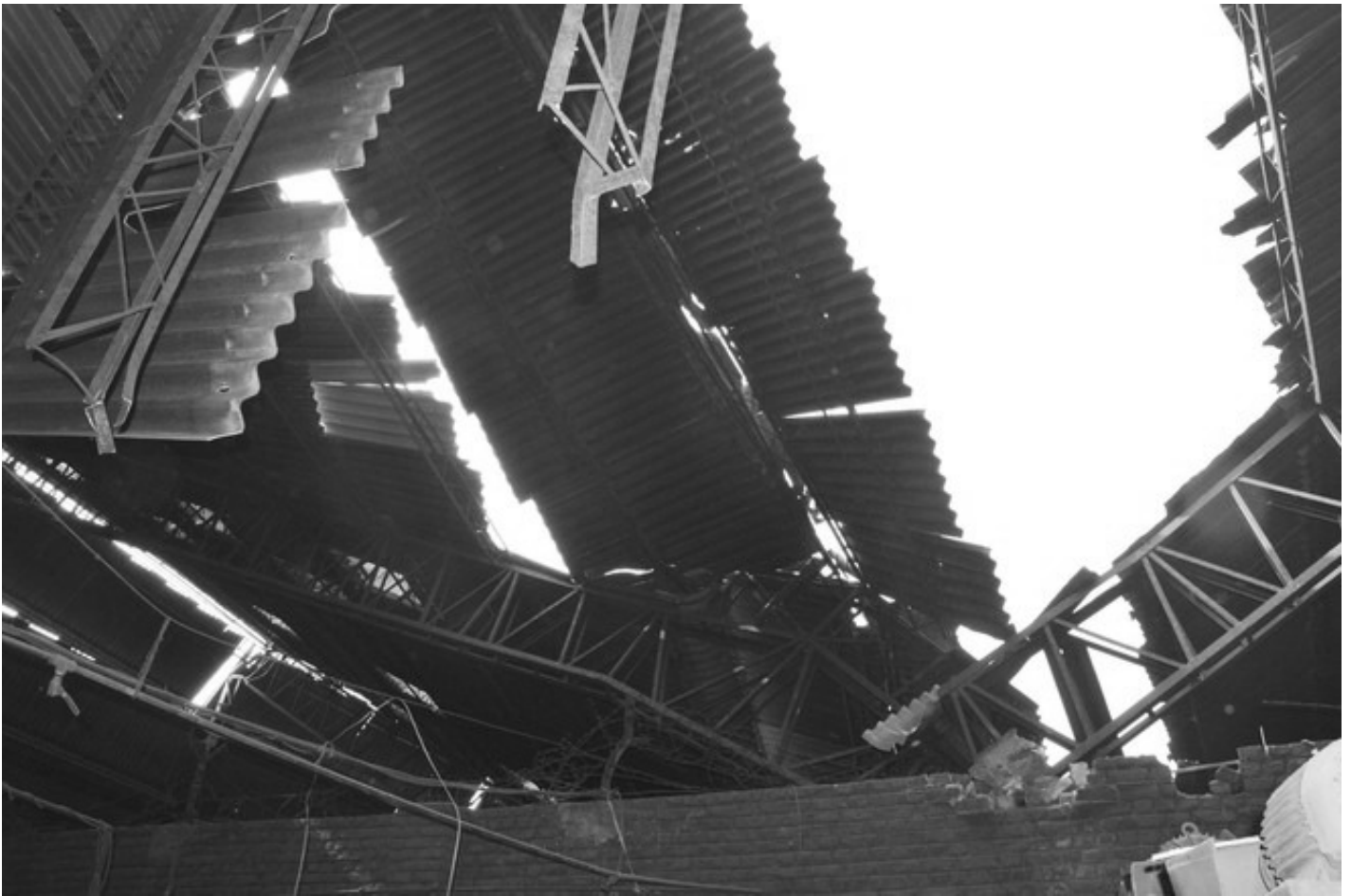
Ludhiana » Community

## 15 workers hurt as factory shed collapses

Major tragedy averted as labourers get time to escape from premises

Published on: Dec 13 2015 12:54AM

---



The collapsed shed at a cycle parts unit in Phase 3, Focal Point area, in Ludhiana on Saturday. Photos: Inderjeet Verma

---

**Charanjit Singh Teja**

**Tribune News Service**

**Ludhiana, December 12**

Over 15 labourers were injured after a cemented shed collapsed at a cycle parts unit in Phase 3, Focal Point area here today. Most of the workers

**4 suffer major injuries**

- Eyewitnesses said the shed came down slowly as it was fixed

parts unit in Phase 3, local unit area, here today. Most of the workers had moved out before the shed collapsed. The incident took place at Gobind Cycle Parts Manufacturers around 11 am today. Around 50 labourers were working at the unit at the time of the mishap.

Eyewitnesses said the shed came down slowly as it was fixed with iron frame. The workers got enough time to leave the spot. Some of the labourers were injured while running towards a safe place as heavy machines and cycle parts were lying there. Only four workers suffered major injuries as cemented sheets fell on them.

After getting information, the police from Moti Nagar reached the spot. The victims were rushed to the nearby Kalara hospital.

Meet Ram, Investigation Officer from the Moti Nagar Police Station, said: “A major tragedy was averted as the workers got enough time to escape from the factory premises. All injured persons are out of danger. Most of them have suffered minor injuries and they were discharged from the hospital after administering first aid. We did not receive any complaint against the owner of the cycle parts unit. We are investigating the matter and the action will be taken as per the law”.

Rahul, owner of the unit, said: “The shed was installed in 2002 and it was in a good condition. The unit is covered with two large cemented canopies. One side of the shed was safe. We are unaware that how the accident took place. We are suspecting that the water tank installed on the canopy might have skipped from the top and fell on the shed. Some of the workers suffered minor injuries while rushing from the spot”.

with iron frame. The workers got enough time to leave the spot. Some of the labourers were injured while running towards a safe place as heavy machines and cycle parts were lying there. Only four workers suffered major injuries as cemented sheets fell on them.



The injured workers under treatment at a hospital.